

## STAINLESS STEEL NEEDLE VALVE THREADED FEMALE NPT PN400

Stainless steel needle valve female npt reduced bore for closing or setting network of common fluids of 1<sup>st</sup> group.

PTFE packing and FKM O ring on stem.

Monoblock design for a better mechanical resistance.

Compatible with explosive atmosphere, ATEX Zone 1&21 and Zone 2&22 (optional marking).

**Certificate**

**3.1**



**Size :** DN1/4" to DN1"

**Connection :** Female NPT

**Min Temperature :** -20°C

**Max Temperature :** +180°C

**Max Pressure :** 400 Bars

**Specifications :** Rising rotating stem

1 piece type

Reduced bore

PTFE packing and FKM O ring

**Materials :** Stainless steel EN 1.4408

## STAINLESS STEEL NEEDLE VALVE THREADED FEMALE NPT PN400

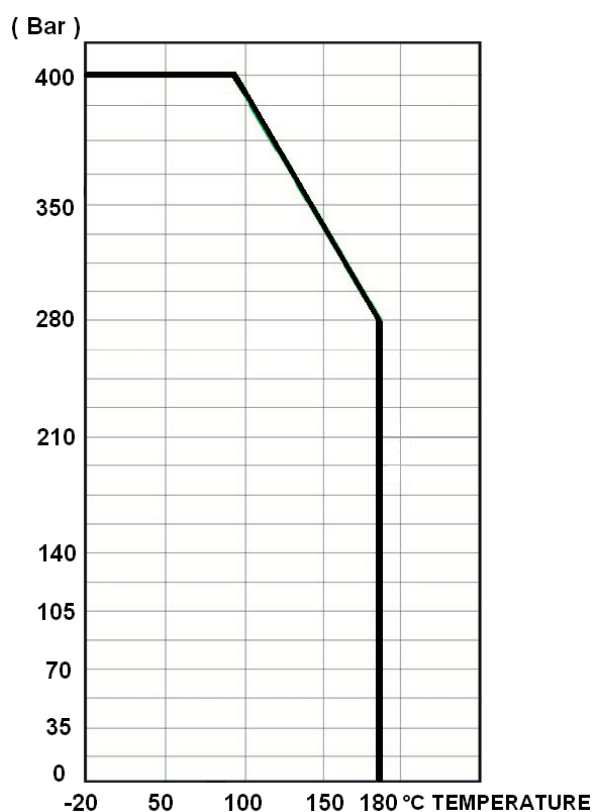
### SPECIFICATIONS :

- Respect the flow direction ( indicated by the arrow )
- Reduced bore
- Rising rotating stem
- 1 piece type
- Stainless steel type
- 6000 Psi type ( PN400 )

### USE :

- For common fluids of group 1
- Min and max Temperature Ts : - 20°C to + 180°C
- Max Pressure Ps : 400 bars ( see graph )

### PRESSURE / TEMPERATURE GRAPH ( STEAM EXCLUDED ) :



### FLOW COEFFICIENT Kvs ( m<sup>3</sup> / h ) :

DN	1/4"	3/8"	1/2"	3/4"	1"
Kvs ( m <sup>3</sup> / h )	0.7	0.78	1.04	1.12	1.55

### NUMBER OF TURNS TO CLOSE OR OPEN THE VALVE :

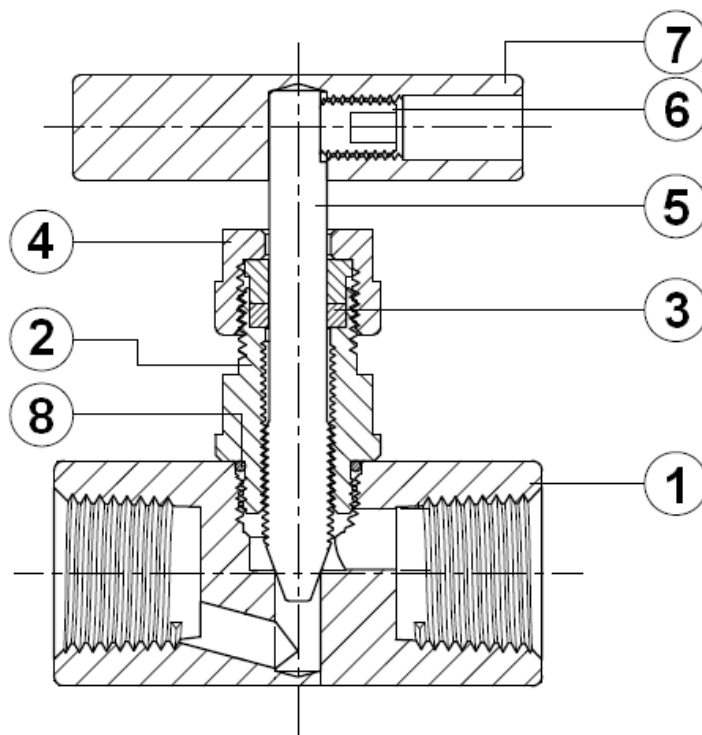
DN	1/4"	3/8"	1/2"	3/4"	1"
Nb of turns	8	9	11	8	12

## STAINLESS STEEL NEEDLE VALVE THREADED FEMALE NPT PN400

### RANGE :

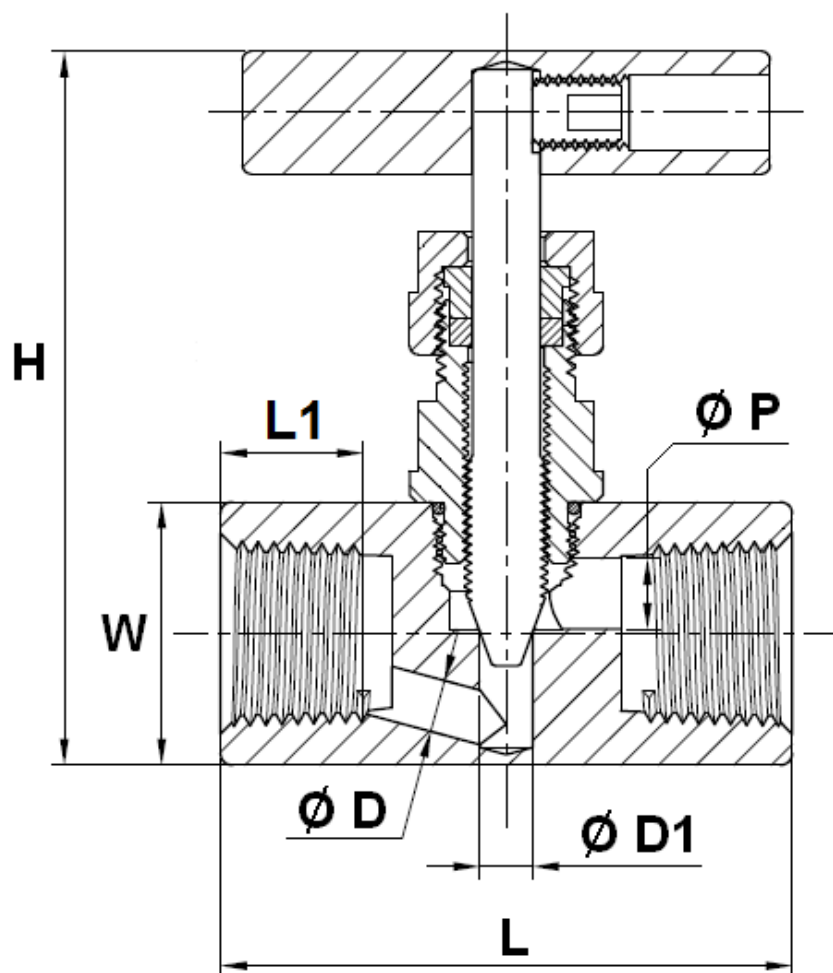
- Stainless steel threaded female NPT **Ref. 487** from DN1/4" to DN1"

### MATERIALS :



Item	Designation	Materials
1	Body	EN 1.4408
2	Bonnet	ASTM A276-316
3	Packing	PTFE
4	Packing nut	AISI 304
5	Stem	ASTM A276-316
6	Handle screw	AISI 304
7	Handle	
8	O ring	FKM

## STAINLESS STEEL NEEDLE VALVE THREADED FEMALE NPT PN400

SIZE ( in mm ) :

DN	1/4"	3/8"	1/2"	3/4"	1"
L	45.5	59	65	70	80
L1	9.5	12	16.3	17	19
H ( closed )	75	77	78	113	116
H ( opened )	87.1	89.8	93.4	129.4	136.7
W on flat	22	25	30	35	45
Ø D	5	5	6	8	8
Ø D1	6	6	6	8	8
Ø P	5	6.3	8	10	12
Weight (in Kg)	0.3	0.4	0.5	0.8	1.21
Ref.	487002	487003	487004	487005	487006

**STAINLESS STEEL NEEDLE VALVE THREADED FEMALE NPT PN400****STANDARDS :**

- Manufacturer certified ISO 9001 : 2015
- DIRECTIVE 2014/68/EU: For liquids or Gas of Group 1
  - Article 4, §3 (SEP), no CE marking
- Certificate 3.1 on request
- Pressure tests according to API 598, table 6
- Threaded female NPT ends according to ANSI B1.20.1
- ATEX Group II Category 2 G/2D Zone 1 & 21 Zone 2 & 22 ( optional marking ) according to directive 2014/34/EU